

## 2026 SORENTO LX FWD

MODEL/OPT.CODE: 7AC3225 / 10  
 EXTERIOR COLOR: PANTHERA METAL  
 INTERIOR COLOR: BLACK  
 VEHICLE ID NUMBER: 5XYRG4JC5TG466573  
 PORT OF ENTRY: WEST POINT

Sold To: LA053  
 LeBlanc Kia  
 2405 WEST HIGHWAY 90  
 NEW IBERIA LA 70560

Ship To: LA053



### STANDARD FEATURES

**MECHANICAL**  
 2.5L Gas Direct Injection (GDI) 4-Cyl Engine  
 8-Speed Automatic Transmission  
 Drive Mode Select

**ADVANCED DRIVER-ASSISTANCE SYSTEMS**  
 Forward Collision-Avoidance Assist - Cyclist/Jct Turning  
 Blind-Spot Collision Warning  
 Rear Cross-Traffic Collision-Avoidance Assist  
 Lane Keeping Assist & Lane Following Assist  
 Driver Attention Warning & High Beam Assist  
 Safe Exit Assist  
 Smart Cruise Control w/Stop & Go

**SAFETY**  
 Dual Front Advanced Airbags & Driver's Knee Airbag  
 Dual Front and Rear Seat-Mounted Side Airbags  
 Full-Length Side Curtain Airbags  
 Electronic Stability Control  
 Tire Pressure Monitoring System  
 Power Rear Door Child Locks

**INTERIOR, COMFORT & CONVENIENCE**  
 12.3" Touchscreen w/Wireless Android Auto & Apple CarPlay  
 Kia Connect w/Comp 3-Yr Ultimate.\* Where Available\*\*  
 SIRIUSXM® w/Free 3-Mo. Subscription\*  
 Rear View Camera with Dynamic Guidelines  
 4.0" Instrument Display  
 Front & Rear USB Charge Ports  
 Steering Wheel Controls (Bluetooth/Audio/Cruise)  
 Smart Key w/ Push Button & Remote Start  
 One-Touch Slide & Fold 2nd Row Seats  
 Leather Wrapped Steering Wheel & Shift Knob  
 Rear Occupant Alert w/ Sensors

**EXTERIOR**  
 17" Alloy Wheels  
 LED Projector Headlights w/ Auto-On/Off  
 LED Positioning Lights  
 Power Adj. Heated Outside Mirrors w/LED Turn Signals  
 Compact Spare Tire

**WARRANTY**  
 10 Year/100,000 Mile Limited Powertrain Warranty  
 5 Year/60,000 Mile Limited Basic Warranty  
 5 Year/60,000 Mile Roadside Assistance

### MANUFACTURER'S SUGGESTED RETAIL PRICE ▶

\$ 32,390.00

ADDITIONAL INSTALLED EQUIPMENT:  
 (In addition to or in place of standard features)  
 Auto-Dimming Mirror w/ HomeLink™ \$375.00  
 Roadside Assistance Kit \$75.00  
 Wheel Locks \$80.00

MSRP INCLUDING OPTIONS

\$ 32,920.00

INLAND FREIGHT AND HANDLING

\$ 1,495.00

### TOTAL MANUFACTURER'S SUGGESTED RETAIL PRICE ▶

\$ 34,415.00

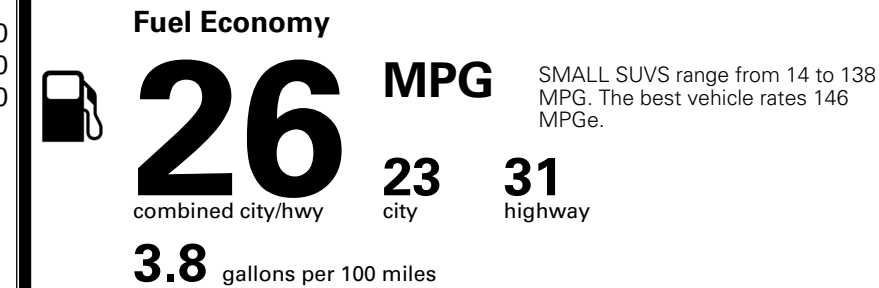
\*Additional terms and conditions apply.  
 \*\*Kia Connect may be currently unavailable for some Model Year 2022 and newer vehicles sold or purchased in Massachusetts; please see owners.kia.com for more information.  
 NOTE: When you purchase this vehicle, Kia America, Inc. collects personal information you provide to the dealership. For information on our collection and use of personal information and your rights, please see our Privacy Policy on www.kia.com.

TOTAL ADDITIONAL WEIGHT: 7.0



## EPA DOT Fuel Economy and Environment

Gasoline Vehicle



**You spend \$1,000 more in fuel costs over 5 years** compared to the average new vehicle.

**Annual fuel cost \$1,900**



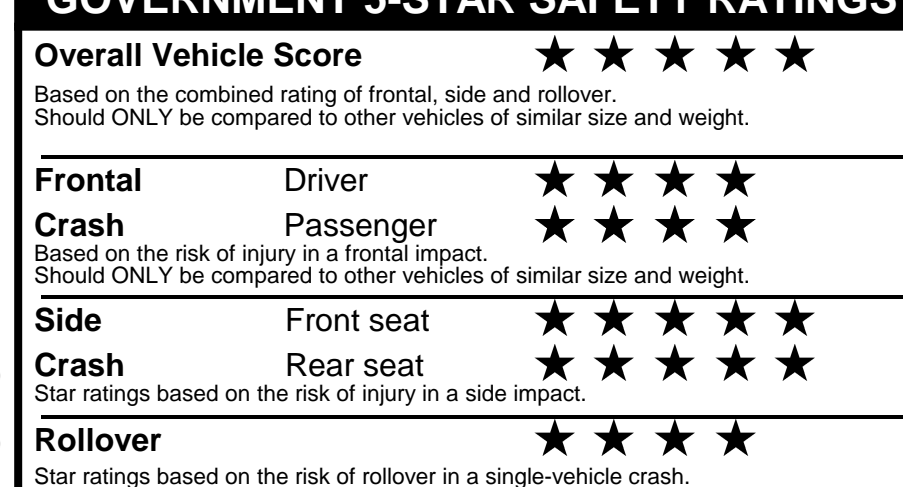
Actual results will vary for many reasons, including driving conditions and how you drive and maintain your vehicle. The average new vehicle gets 29 MPG and costs \$8,500 to fuel over 5 years. Cost estimates are based on 15,000 miles per year at \$ 3.30 per gallon. MPGe is miles per gasoline gallon equivalent. Vehicle emissions are a significant cause of climate change and smog.

**fueleconomy.gov**

Calculate personalized estimates and compare vehicles



## GOVERNMENT 5-STAR SAFETY RATINGS



Star ratings range from 1 to 5 stars (★★★★★) with 5 being the highest.  
 Source: National Highway Traffic Safety Administration (NHTSA).  
[www.safercar.gov](http://www.safercar.gov) or 1-888-327-4236

Manufacturer's suggested retail price includes Manufacturer's recommended pre-delivery service. License and title fees, state and local taxes and other dealer installed options and accessories are not included in the manufacturer's suggested retail price.

## PARTS CONTENT INFORMATION

**FOR VEHICLES IN THIS CAR LINE U.S./CANADIAN PARTS CONTENT: 55 %**

**MAJOR SOURCES OF FOREIGN PARTS: KOREA: 30%**

NOTE: PARTS CONTENT DOES NOT INCLUDE FINAL ASSEMBLY, DISTRIBUTION, OR OTHER NON-PARTS COSTS.

**FOR THIS VEHICLE FINAL ASSEMBLY POINT: WEST POINT, GA, USA**

**COUNTRY OF ORIGIN ENGINE (MOTOR): USA**

**TRANSMISSION: USA**